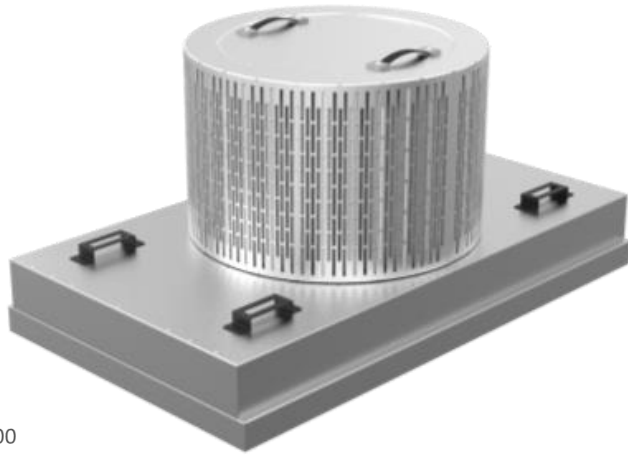
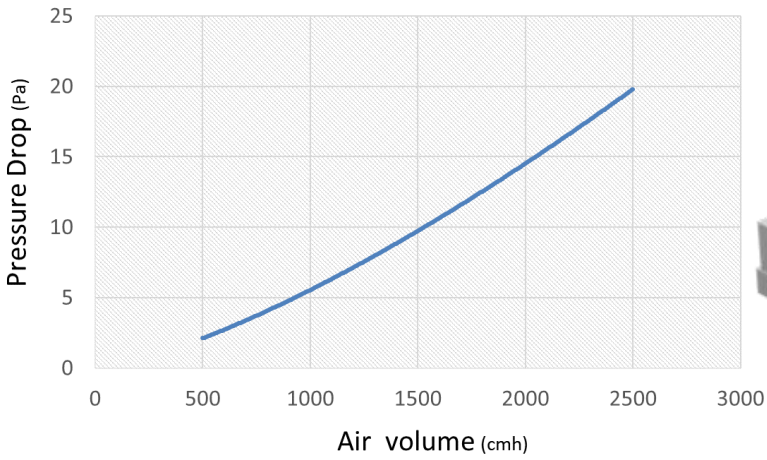


Features

- Round type filter applied on FFU doesn't need further structure such as buffer to put on filter
- Filter dimension is specified as 620(w)x400(h) so it needs available space for installation.

<Pressure drop >



<Filter Installation on FFU >

FFU (Fan Filter Unit) Filter

General specification



| | |
|-----------------------|---|
| Filter type | Round type |
| Frame material | Aluminum |
| Size[mm] | 620 x 400 H |
| Typical air flow rate | 0~2,500m ³ /H |
| Target gases | NH ₃ , Amines Acid (HF, HCl, Cl ₂ , NO _x , SO _x , H ₂ S) VOCs (Toluene, PGMEA, Siloxane) O ₃ |